

AT HOME LEARNING

System Requirements

www.athomelearning.us

There are certain requirements your computer must meet in order to run On-line (web based & downloadable) courses. The following lists the requirements, and how to check to see if your computer meets these requirements. Note that these are the **minimum** requirements that your computer must meet.

Operating System

Microsoft Windows 98 or Windows ME or Windows 2000 (with service pack 1+) or Windows XP (Home or Professional).

Processor Speed

Pentium 300 MHz Processor or higher.

Memory (RAM)

128MB of RAM or higher.

To check the above information:

Right-click the **My Computer** icon on your desktop to display the shortcut menu and select **Properties**. A window similar to the one shown on the right will display. The information about your Operating System, Processor Speed, and RAM will appear here.

Audio

16 Bit Audio

If your computer has a speaker icon in the bottom right corner of the screen, it will support 16 Bit Audio.

Internet Connection

Consult your Internet Service Provider and confirm that your service is providing High-Speed bandwidth. It is recommended that you have a Cable or DSL connection.

Display Settings

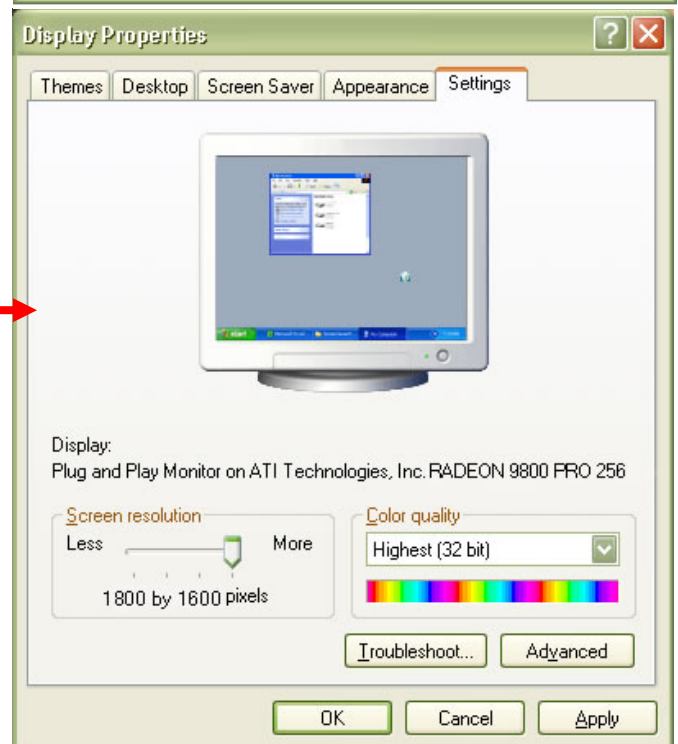
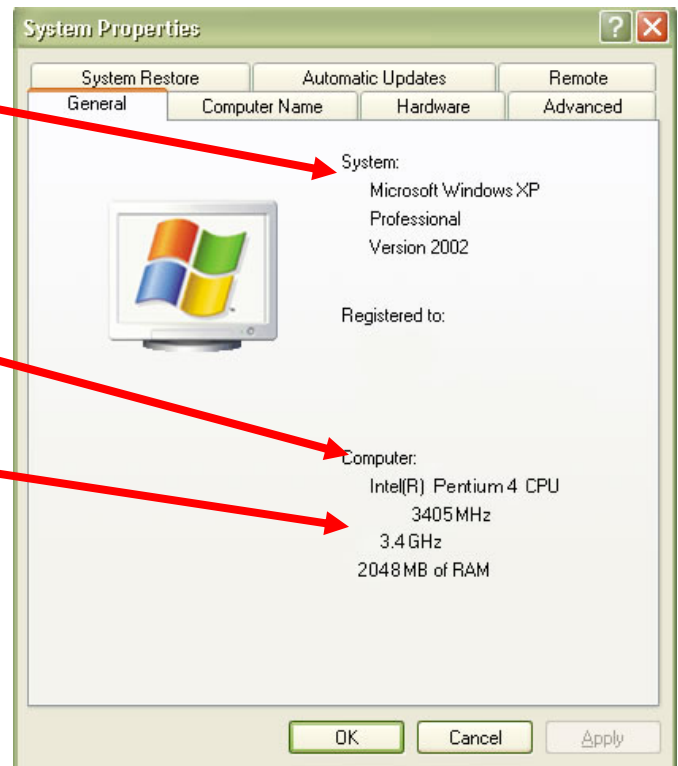
1024x768 pixels with 256 colors or better.

To check the display settings:

Right-Click anywhere on the Desktop to display the shortcut menu and select **Properties**. Then, click on the **Settings** tab.

Monitor

17" Monitor Recommended



Internet Browser

Microsoft Internet Explorer version 5.0 with Service Pack 2 or higher.

Or, Netscape Navigator version 6.X or higher.

AOL BROWSER IS NOT SUPPORTED!

Important - your browser must support Cookies, Java, and JavaScript. (see Java below)

Java

To check to insure you have Java installed

Start Internet Explorer.

From the menu, choose **Tools, Internet Options.**

Click on the **Advanced** tab.

Scroll down the Settings list to locate **Java (Sun)**

(The Settings list is organized in alphabetical order.)

If Java (Sun) is not in the list, or if your version is earlier than **version 1.5.0**, you should download and install the current version of Java. To do this,

Start your Internet Browser and go to:

Sun Java Download



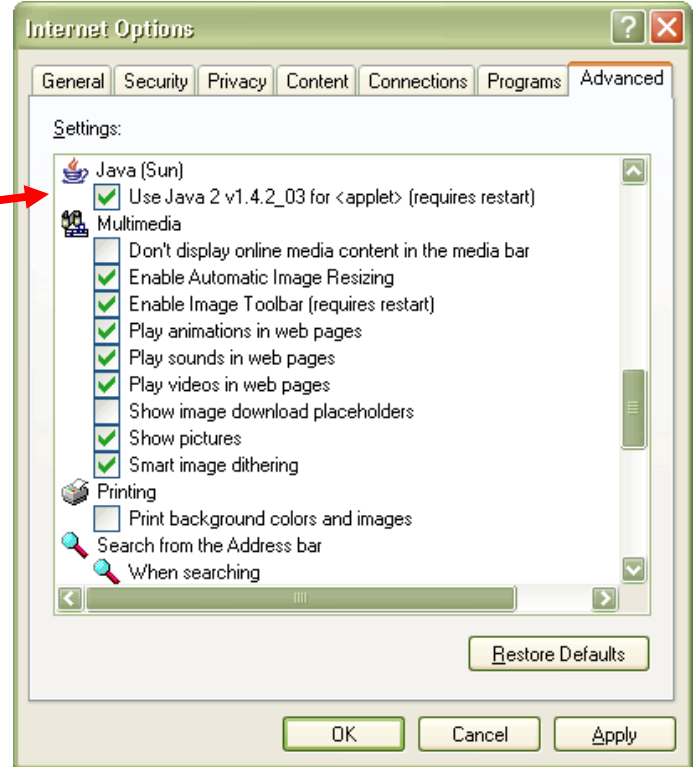
You will be prompted to indicate where you would like to save the file.

Choose to save the file to your **Desktop**. Click **Save**.

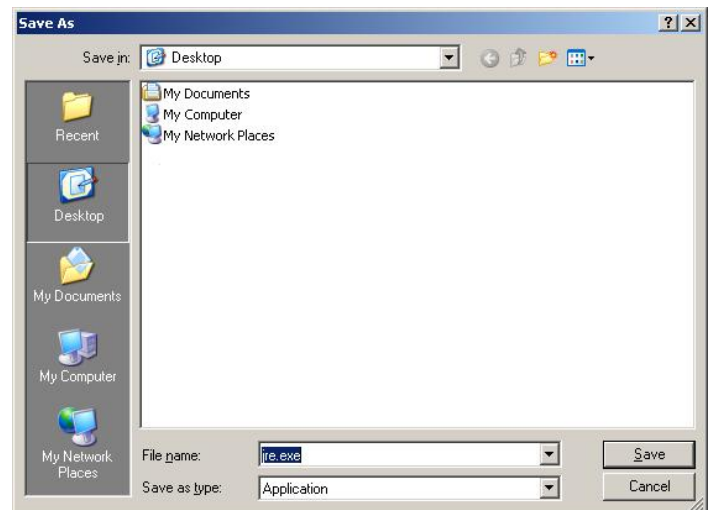
Once the file has been saved to your Desktop, close all open windows.



Next, double-click on the **j2re.exe** icon on your desktop to start the installation program.



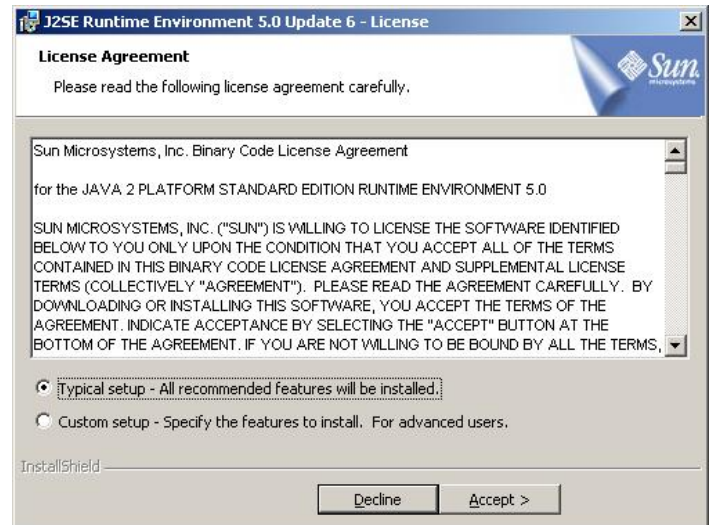
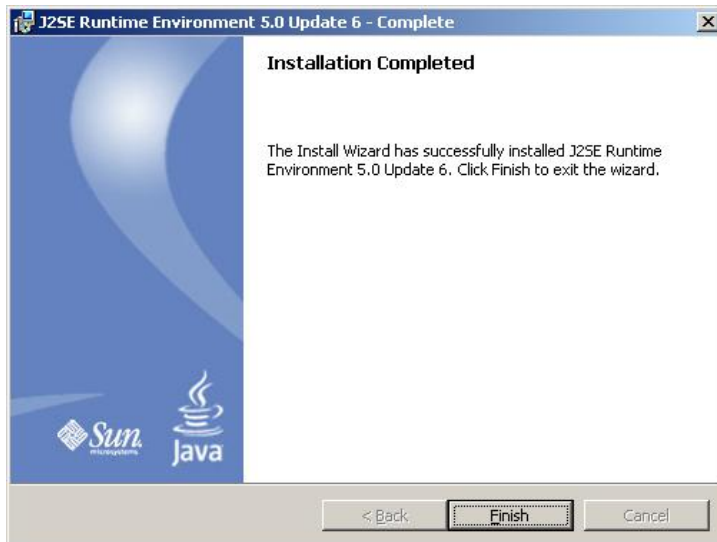
You will be prompted with a message asking you what you want to do with this file. Click **Save**.



The installation wizard will start and the Java 2 Runtime Environment license window will display.

Review the License Agreement and then select the option **Typical Setup**.

Click **Next**.



The installation will start and will proceed to install the Java 2 Runtime Environment.

Be Patient. This will take a few minutes to run.

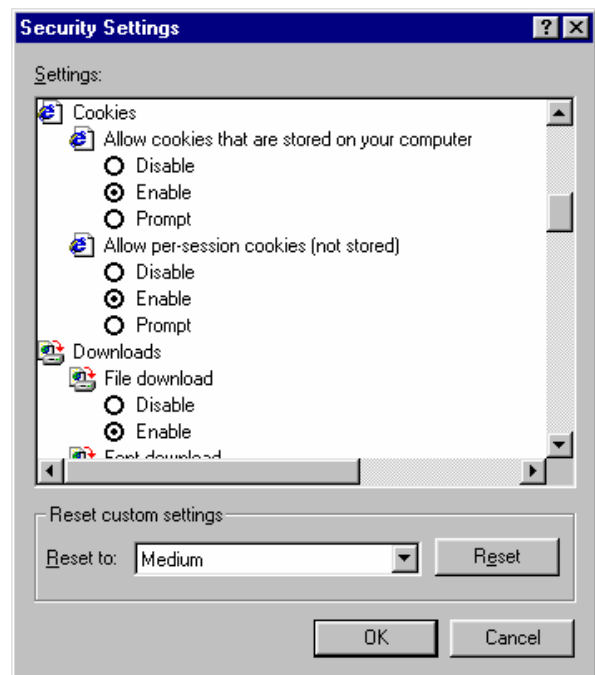
Upon completion, click **Finish**.

To check your Cookie settings:

Start Internet Explorer.

From the menu, choose **Tools, Internet Options**.

Depending upon your version of Internet Explorer, this setting may be found in a few different locations. It is typically found within a Security setting or a Privacy setting and may look similar to the picture to the right or the one shown below.



QuickTime with the Sun Java 2 Runtime Environment

Some courses contain optional video content that can be run. To be able to run the video content, you must have QuickTime 6.X installed with the Sun Java Runtime Environment (JRE).

To check to see if this is installed:

From the **Start Menu**, open the **Control Panel** window. (In Windows 98, this is found within the Settings menu option).

If QuickTime has been installed on your computer, it will appear in the list of your Control Panel options. If it is not in the list, you may download and install it from our website. To do this,

Start your Internet Browser and go to

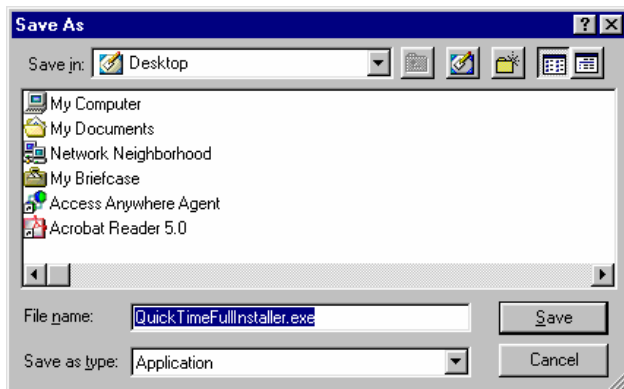
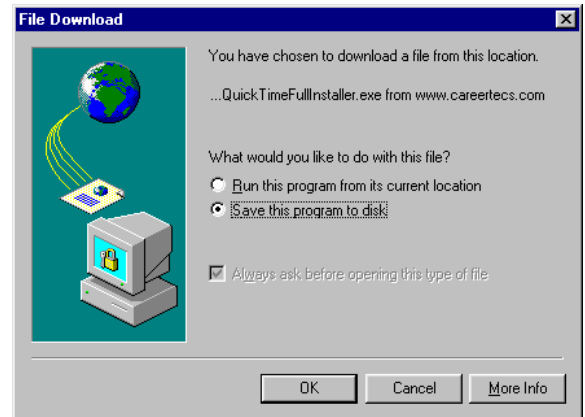
[QuickTime Full Install](#)

You will be prompted with a message asking you what you want to do with this file. The **Save this program to disk** option will be selected by default.

Click **OK**

You will be prompted to indicate where you would like to save the file.

Choose to save the file to your **Desktop**.



Once the file has been saved to your Desktop, close all open windows.

Next, double-click on the **QuickTime Installer** icon on your desktop to start the installation program.



The Welcome to QuickTime 6.4 Setup window will display.



Click **Next**.

A message window will display indicating that you should close all open Windows programs before you continue.



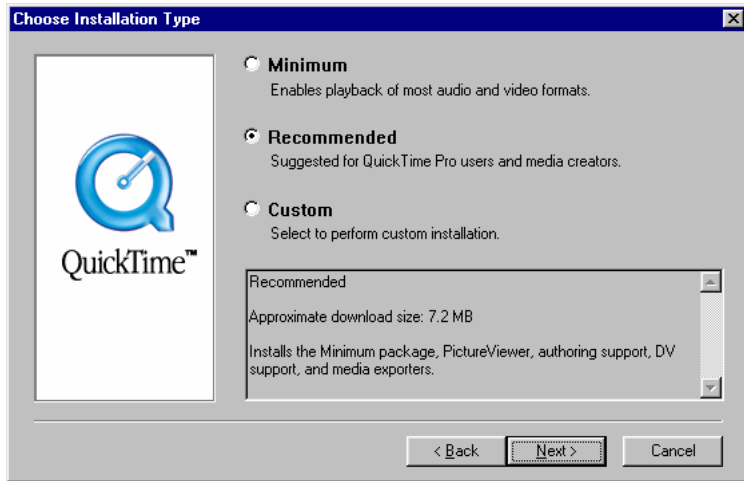
Click **Next**

A Software License Agreement window will display. You must acknowledge the Software License by clicking on **Agree**

Next, you will be prompted to indicate where you wish to install the program.

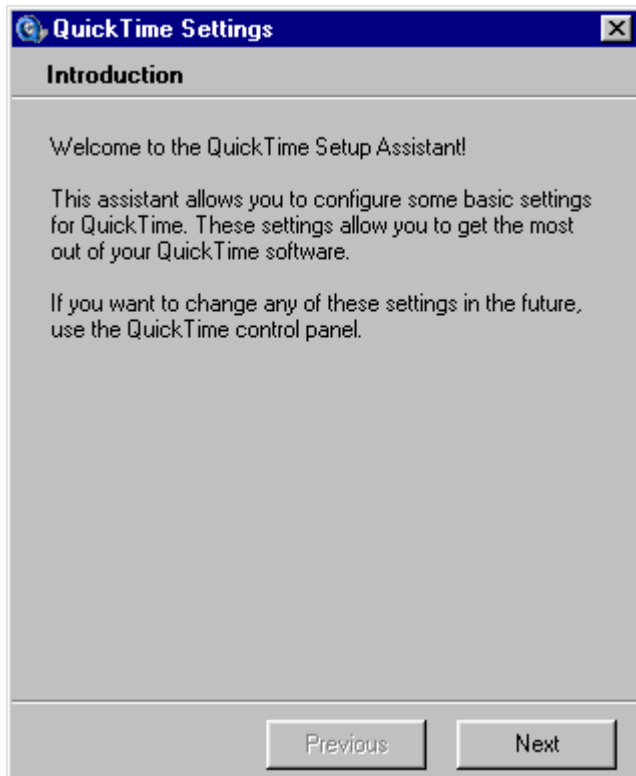
Click **Next** to accept the default Destination Directory and continue.

Finally, you will be prompted to choose the Installation Type.

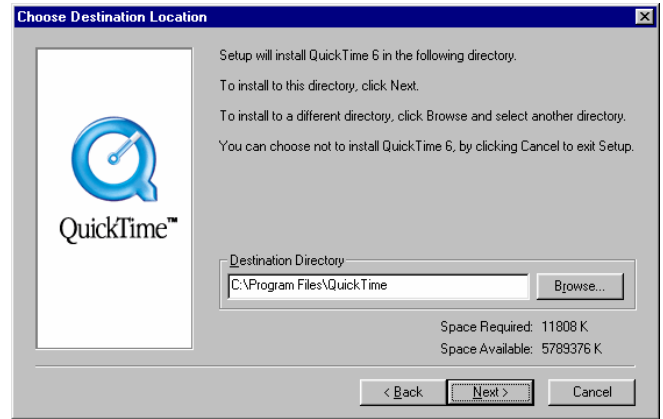


Click **Next** to accept the default location and continue. (If you are prompted to enter registration information, click **Next**.)

The QuickTime Setup Assistant will now start and will walk you through configuring the basic settings for QuickTime.

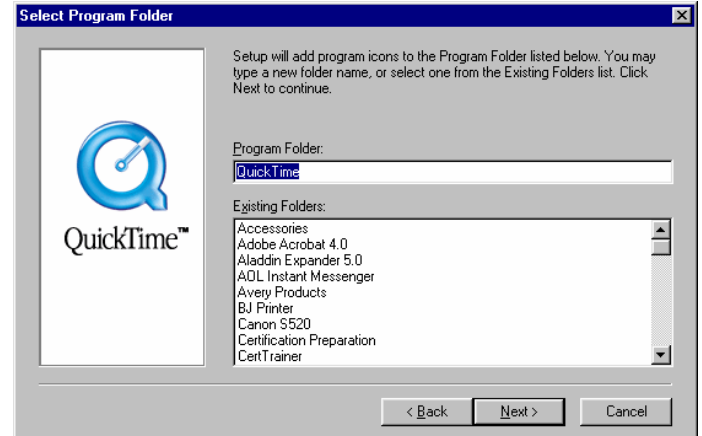


You are now finished installing the QuickTime program!



Click **Next** to choose the default installation type of **Recommended** and continue.

Finally, you will be prompted to choose the Program Folder where you would like the QuickTime program icon to appear.



Click **Next**. Then, click **Next** to each of the following prompts:

Browser Plug-in
File Type Associations

The Finished window will display. **Uncheck** the two checked options and click **Close**.

